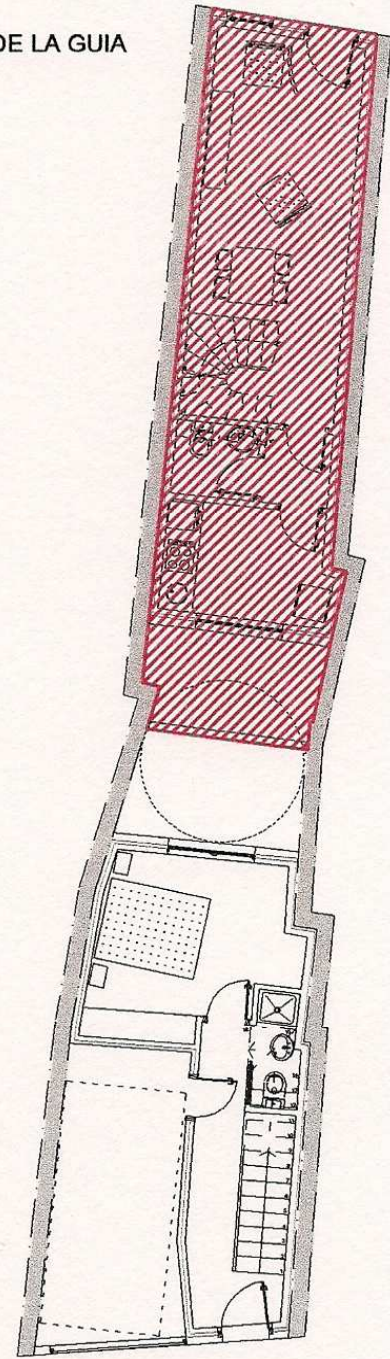
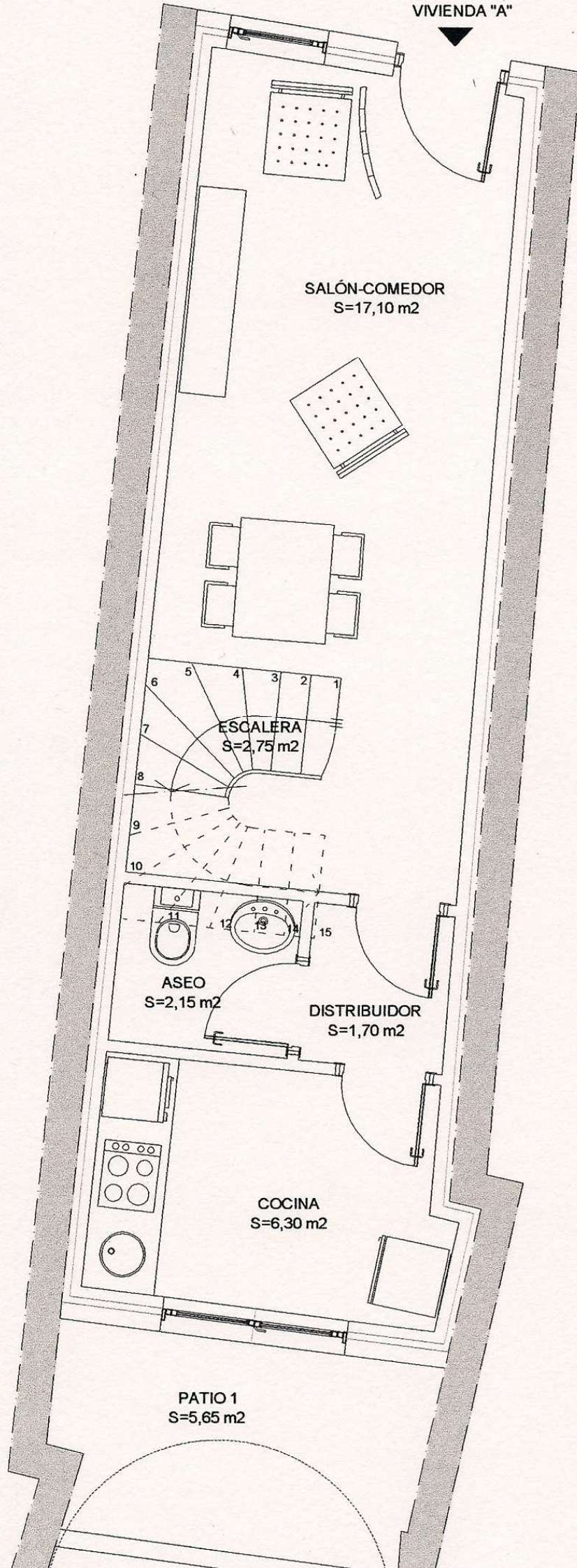


VIVIENDA "A"

PLAZA VIRGEN DE LA GUIA

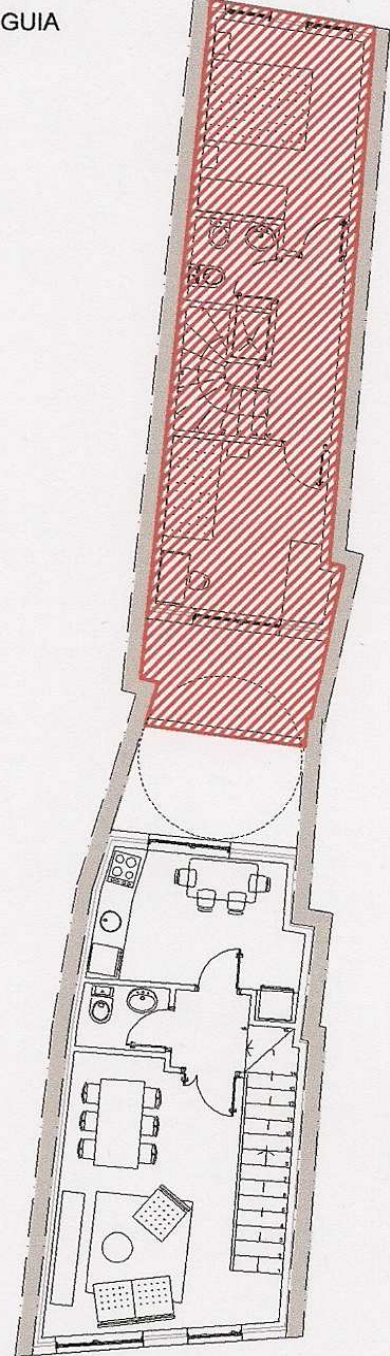
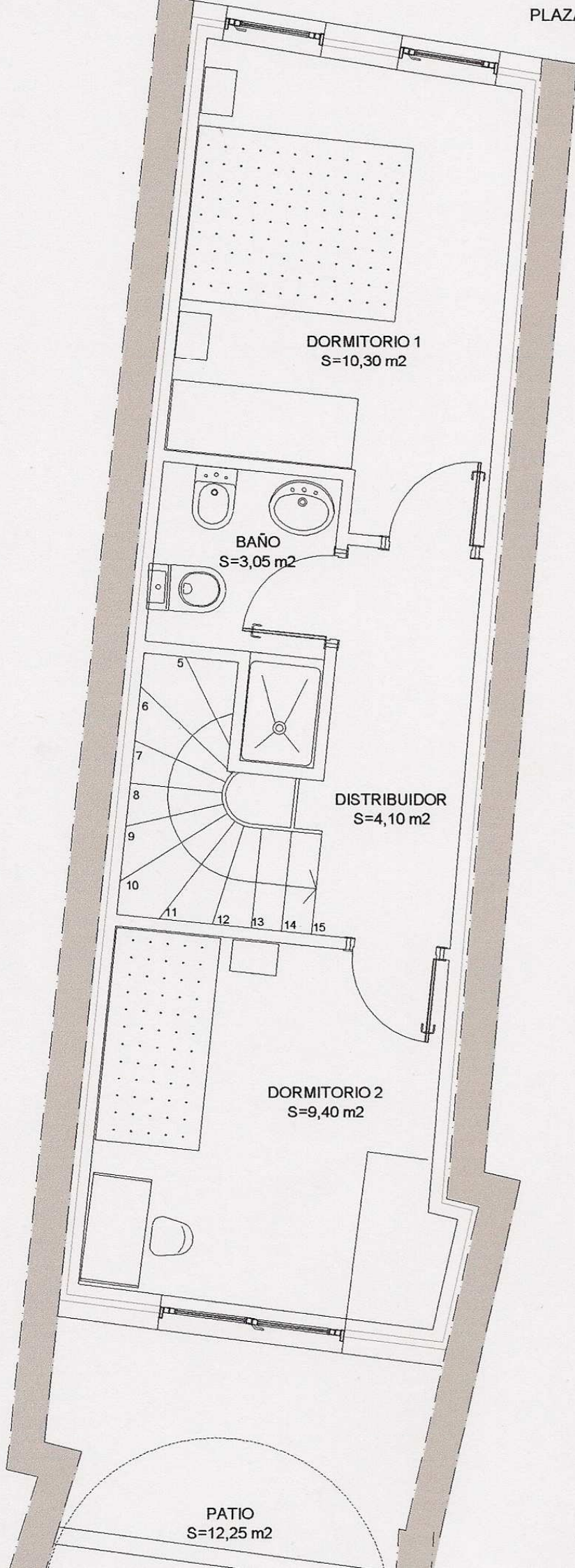


VIVIENDA "A"
P. BAJA S=36,05 m ²
P. 1ª S=36,05 m ²
TOTAL SUP. CONSTRUIDA S=72,10 m ²

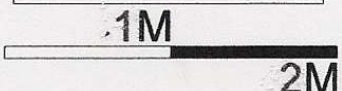


PLANTA BAJA





VIVIENDA "A"
P. BAJA S=36,05 m ²
P. 1 ^a S=36,05 m ²
TOTAL SUP. CONSTRUIDA S=72,10 m ²



PLANTA 1.^a

